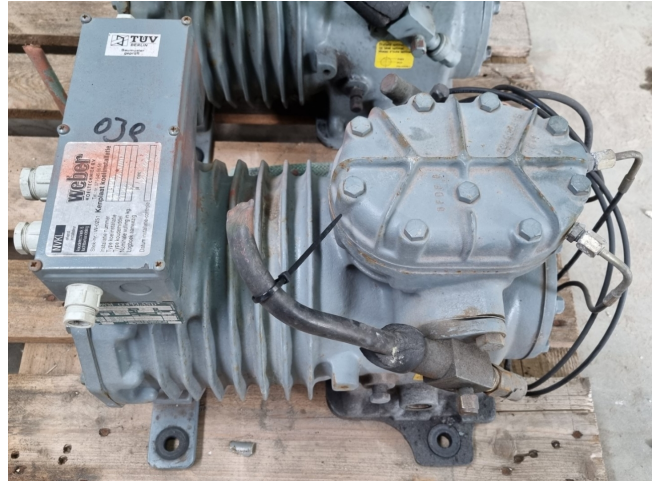


# DWM DLED-201-EWL-000

## Specifications

Marka	DWM
Typ	DLED-201-EWL-000
Czynnik chłodzący	Freon
kW at +10°C/+40°C	10,9
kW at 0°C/+40°C	7,4
kW at -5°C/+40°C	6,0
kW at -10°C/+40°C	4,7
kW at -20°C/+40°C	2,7
kW at -30°C/+40°C	1,3
kW at -40°C/+40°C	0,4
Okno widokowe	✓
m <sup>3</sup> / h	9,9
Uwagi	Y.o.b. 1988
Rozmiary	510x350x430 mm (LxWxH)
Stock	1



## Description

### Used DWM DLED-201-EWL-000

Used DWM DLED-201-EWL-000 semi-hermetic reciprocating compressor on Freon with a sight glass. The compressor has a displacement of 9,9 m<sup>3</sup>/h.

\*Why choose for HOSBV? Were not only the largest used refrigeration specialist in Europe, but also, we deliver all equipment including an extensive test, warranty and industrial cleaning.

\*Optional we can also perform a new paint job and arrange the logistics.

